



- **Purpose of RTP:**
 - Identify the transportation guiding principles & goals for the region
 - Identify transportation investments through 2050
- **Implement community-based process**
- **Plan completion by May 2021**



- **The guiding principles of the RTC are to support:**
 - **Safe and healthy communities**
 - **Economic prosperity and innovation**
 - **Sustainability**
 - **Increase travel choices**





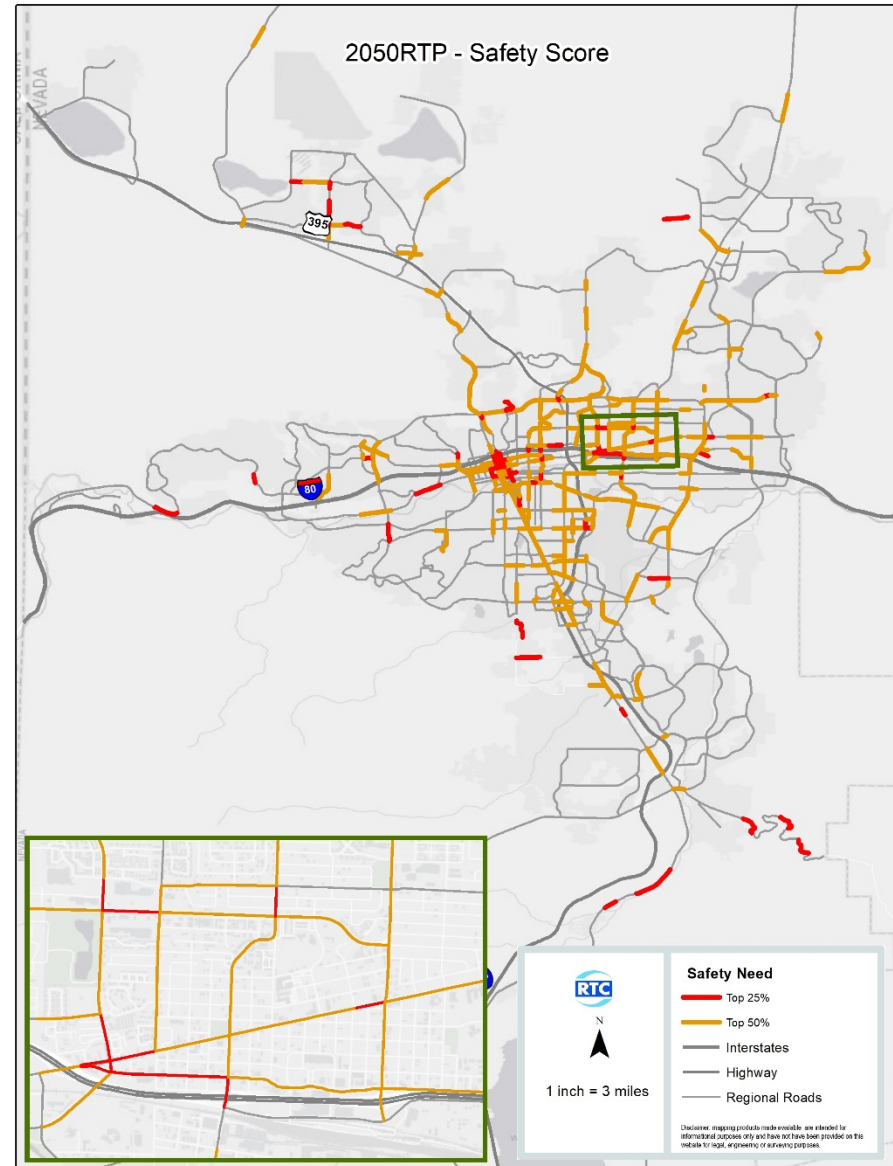
Community-Based Planning

- RTP Agency Working Group
- Inter-County Working Group
- RTC Advisory Committees
- Community Planning Workshops & Forums
- Virtual Presentations/Surveys/Social Media
- Coordinated Human Services Transportation Plan
- Presentations to Elected Officials



Improving Safety

- Vision Zero Truckee Meadows
- Community Awareness & Education
- Safe Routes to School
- Nevada Strategic Highway Safety Plan
- Complete Streets Master Plan





Promoting Healthy Communities & Sustainability

- Nevada Climate Initiative
- Air Quality/Transportation Conformity
- RTC Sustainability Plan
- Active Transportation Improvements
- Natural Resources





Other RTP Goals

- Manage existing systems efficiently
- Integrate all types of transportation
- Promote regional connectivity
- Promote equity and environmental justice
- Improve freight and goods movement
- Invest strategically
- Monitor implementation & performance

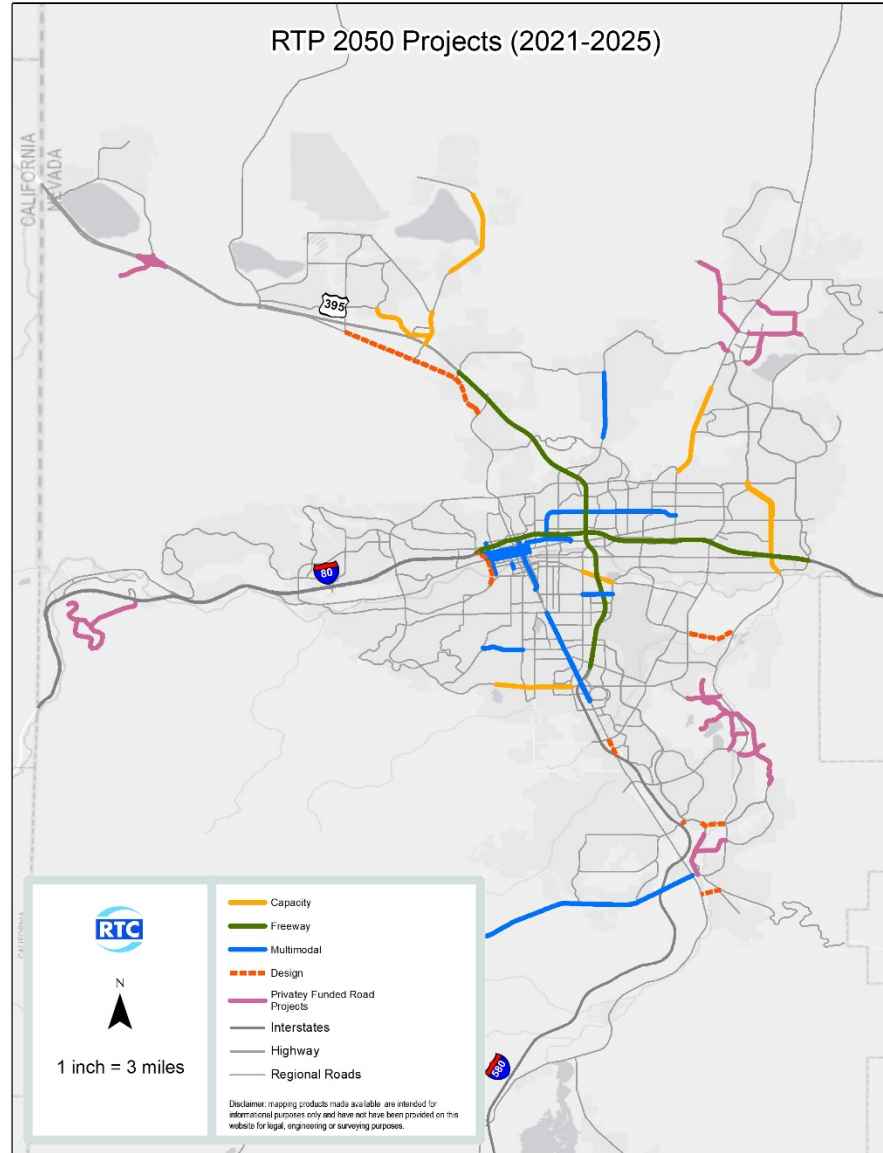


Project Evaluation Criteria

- For all project types:
 - Safety
 - Traffic volumes/congestion
 - Project readiness
 - Regional Plan land use priority
 - Private/other agency funding
 - Equity
 - Bicycle/Pedestrian Connectivity
 - Flood mitigation
 - Public input (to be included)
 - Agency Working Group input (to be included)



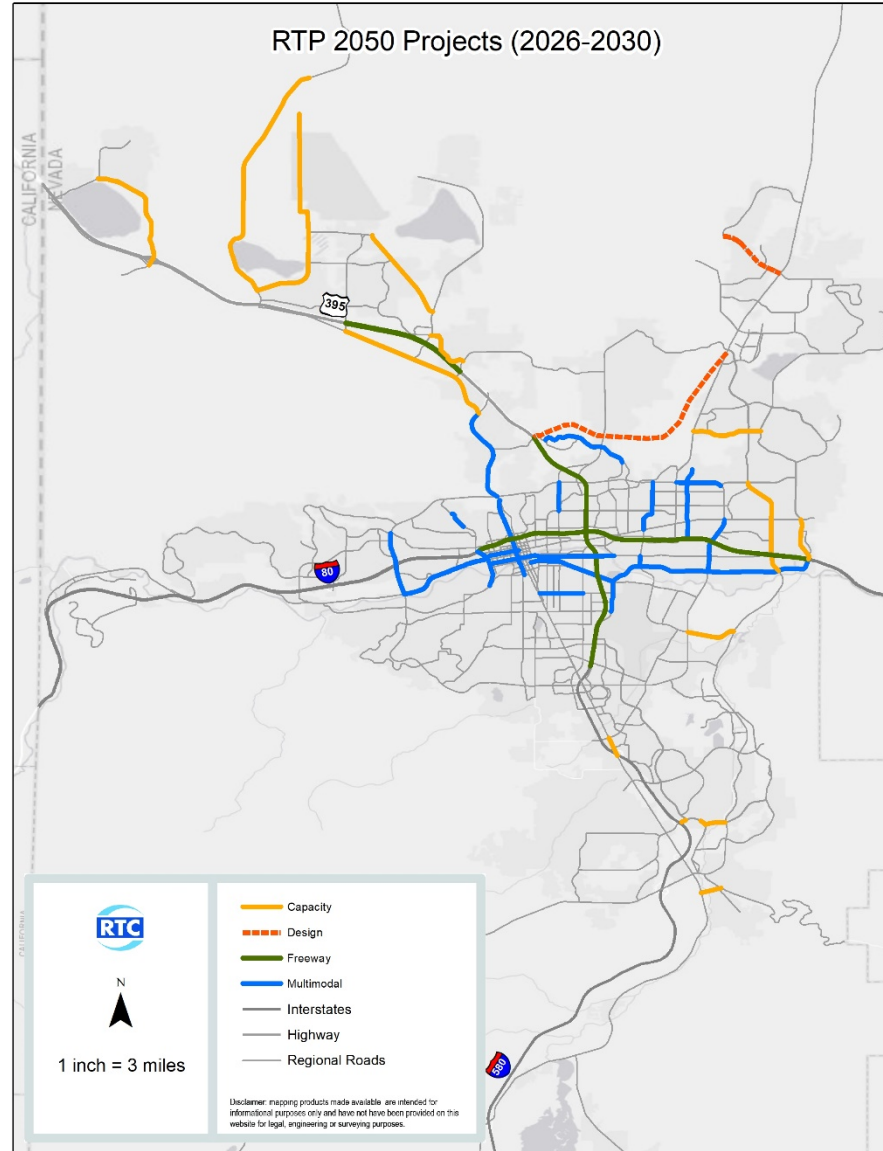
Proposed Projects: 2021-2025



DRAFT
Subject to Change



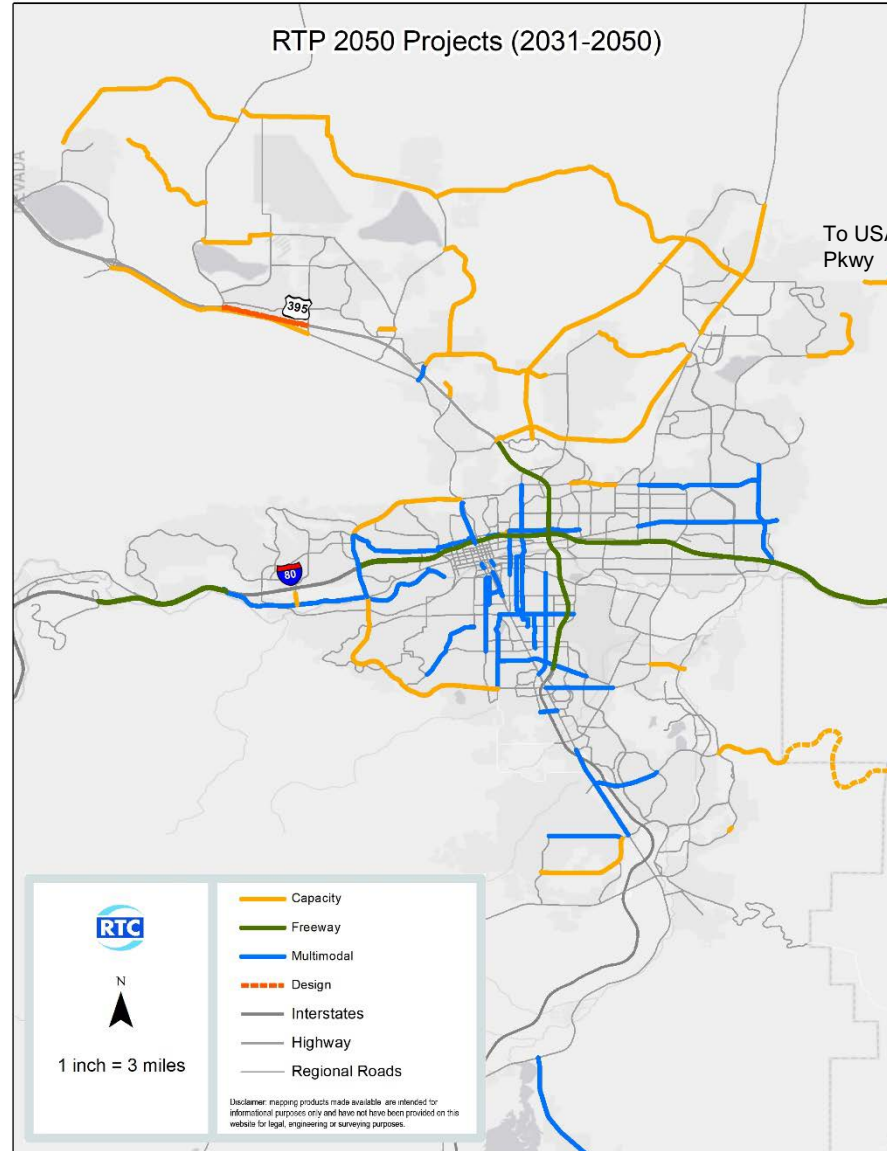
Proposed Projects: 2026-2030



DRAFT
Subject to Change



Proposed Projects: 2031-2050



DRAFT
Subject to Change



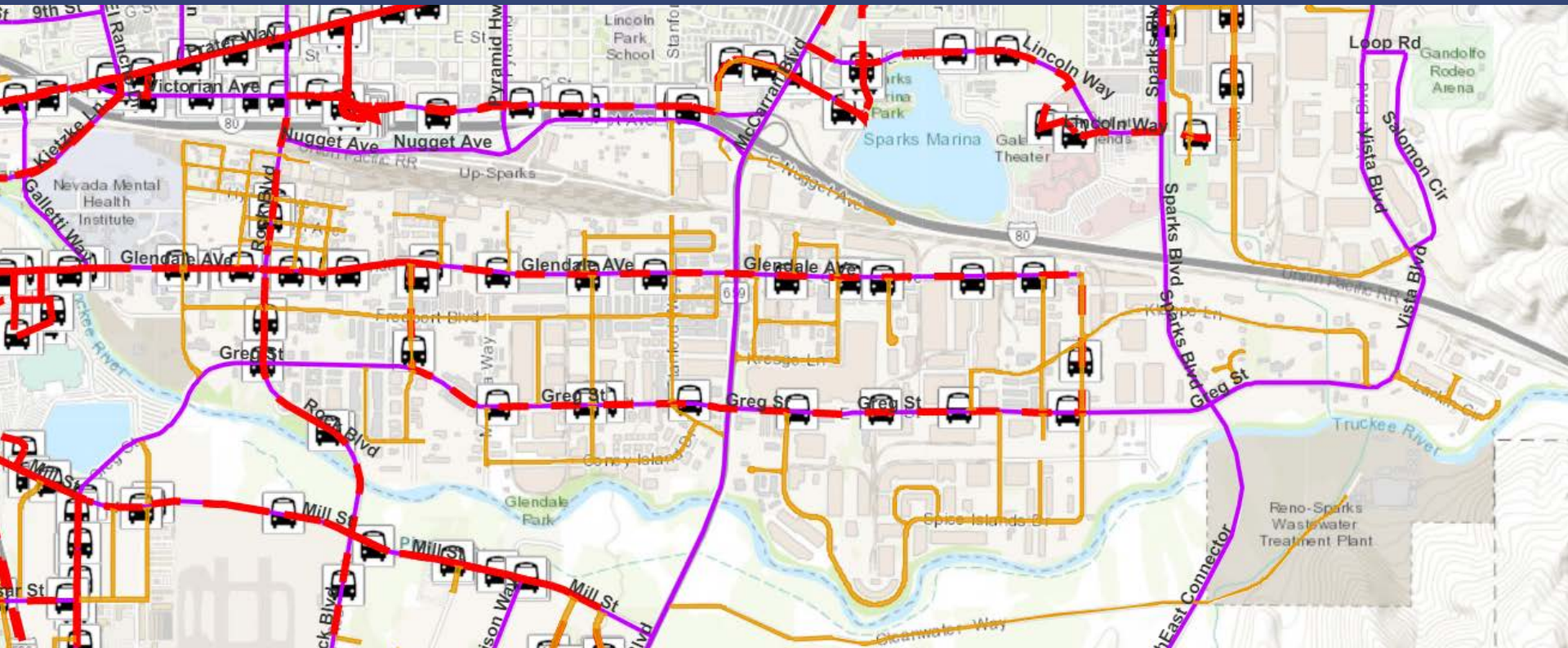
Priorities for the Transit System

- Productive, cost effective, high-quality transit service
- Workforce mobility & attraction of new riders
- Innovative approaches to mobility
- Maintain existing service levels and expand if additional revenue becomes available





Sparks Industrial Area

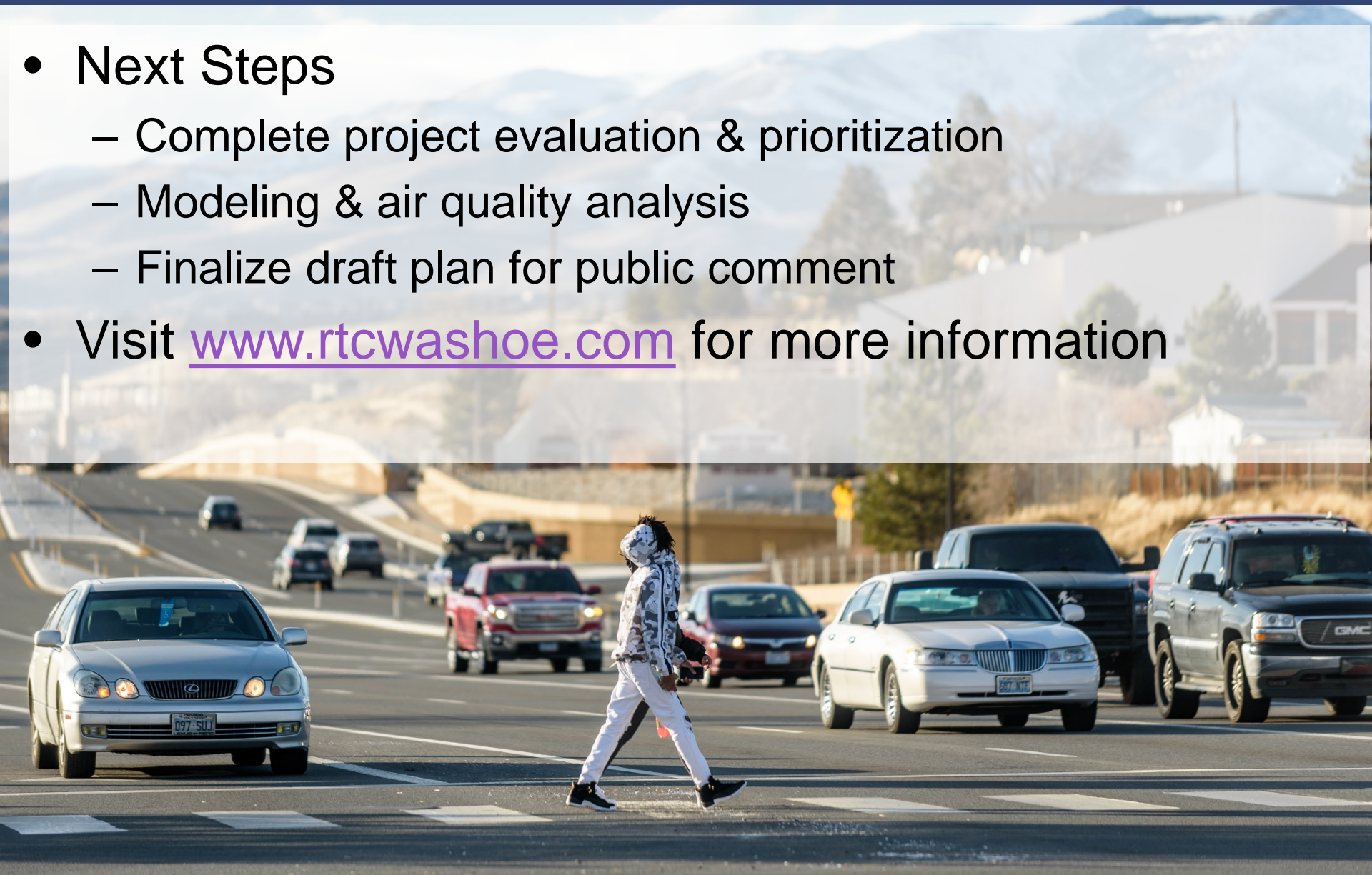


- Long-term need to improve pedestrian access from transit to employment locations
- Transportation safety & mobility
- Potential park & ride location



Next Steps

- Next Steps
 - Complete project evaluation & prioritization
 - Modeling & air quality analysis
 - Finalize draft plan for public comment
- Visit www.rtcwashoe.com for more information





THANK YOU

Amy Cummings

**Deputy Executive Director/
Director of Planning**

Regional Transportation Commission
of Washoe County

acummings@rtcwashoe.com

rtcwashoe.com
Your RTC. Our Community.

